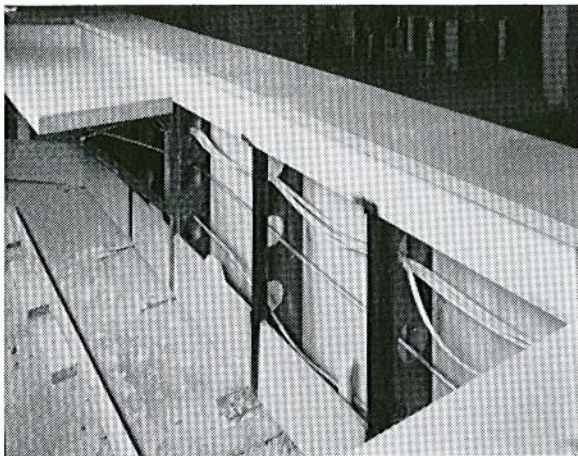
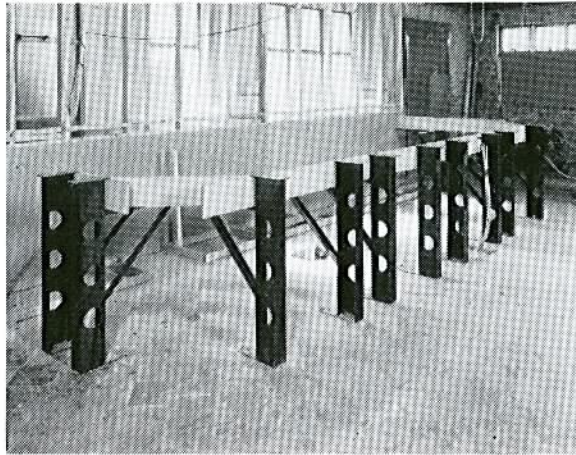


# **BAR FAST\***

**SYSTEM**



## **BAR FAST SYSTEM**

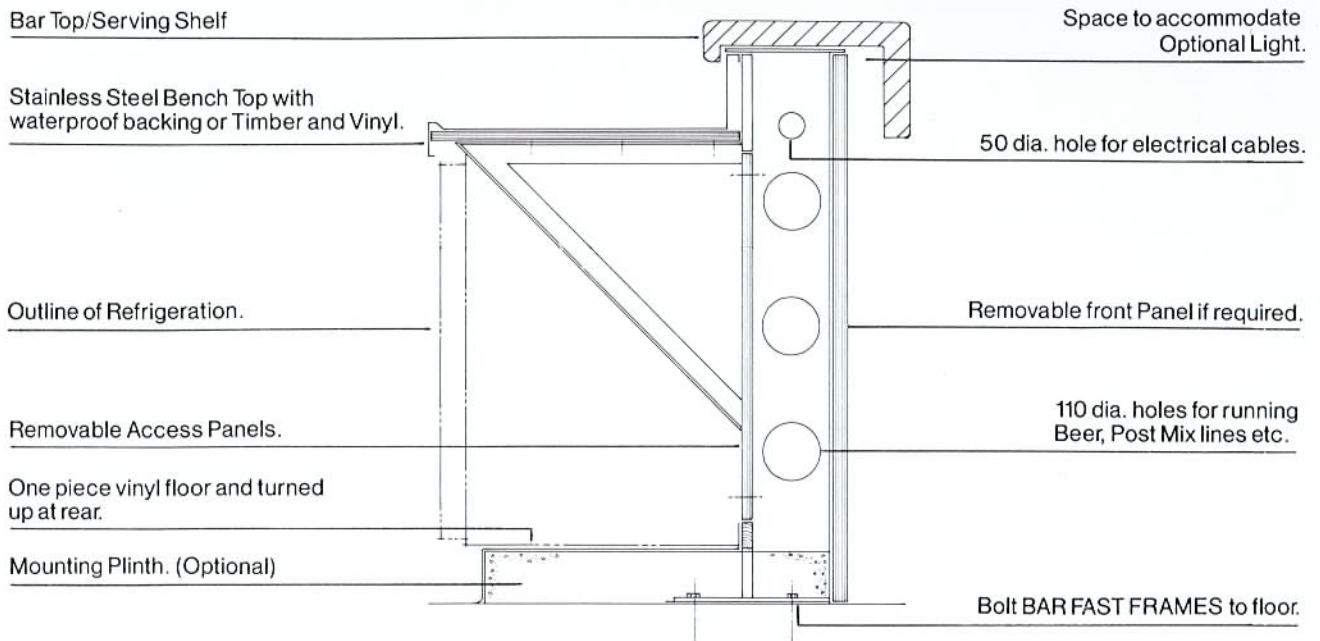
Specially formed robust channel sections have been designed to make the construction and servicing of beverage bars easier therefore reducing the construction and maintenance costs.

The system allows for the easy running of beer, post mix, water, refrigerant and electrical lines through the large diameter holes in each BAR FAST\* frame. A design feature is the way in which the floor covering material can be sealed between the floor and the inner bar face therefore reducing the possibility of beer and liquid seepage.

BAR FAST\* has already been acclaimed by shopfitters and builders as the most economical way of constructing bar counters, giving improved flexibility with straight line, round or irregular shaped bars. Also Reception counters and Shop counters.

Once BAR FAST\* frames have been aligned, plumbed and fixed down, the fitting off is then easily and quickly completed due to the design of the framework.

\*BAR FAST IS A TRADE MARK.  
Design Application Number 1083/88.



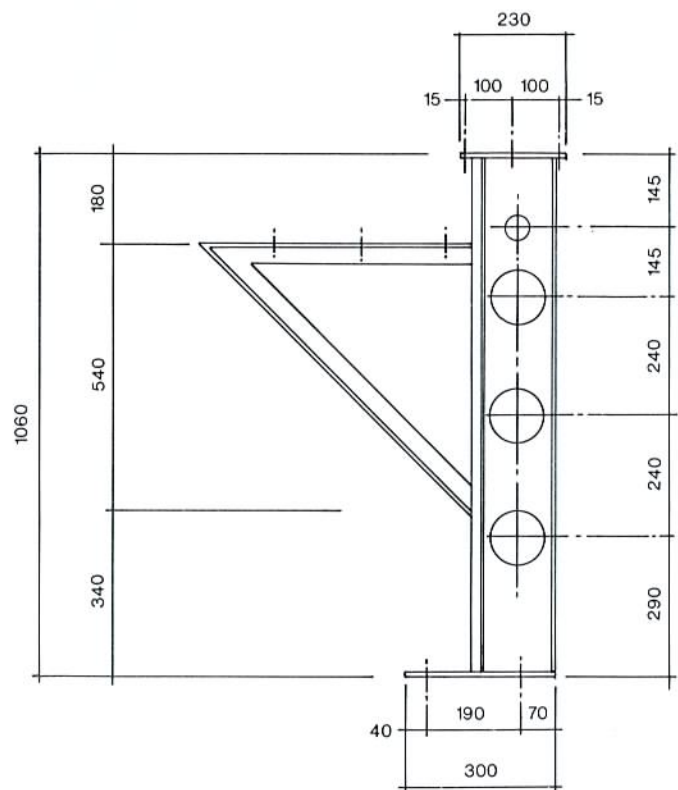
### TYPICAL BAR SECTION

#### GENERAL

- BAR TOP** : To Architectural Detail.
- FRONT PANEL** : To Architectural Detail.
- SINK & DRAINER or** : 600 wide, upstand at rear with beaded front edge. S/S by BAR FAST
- PLAIN TOP** : With suitable waterproof backing. (S/S by Bar Fast or timber & vinyl by builder)
- BAR FAST FRAMES** : Securely fix to concrete floor. 2 places per frame.
- PLINTH** : Must be flat and level Vinyl covering over, turned up at rear and down at front.
- INTERNAL PANELS** : Must be removable to provide access to Beer, Post Mix, Water and electrical lines.
- REFRIGERATION** : Shown in phantom outline, Doors not to project beyond S/S top lengths to suit distance between BAR FAST\* FRAMES.

#### ALSO AVAILABLE

Glass Washers, Glass Racks Supports, Glass Baskets, Ice Bins, Glass Chillers, Post Mix, Ice Makers, all available to suit and complement the BAR FAST SYSTEM.



### BAR FAST\* FRAME